

An impressive design offers comfort and flexibility, as **Cathy Watts** reports

Miravet Castle is a massive ancient monument in Spain linked to the Knights Templar. Sovereign Building Company director David Savietto said the name Miravet had been chosen because the castle had a tradition of honesty and strength, which matched the family-run builder's reputation and goals.

"We specialise in individual designs and our display homes are known as concept homes where clients can obtain ideas for their home and view our quality workmanship, Mr Savietto said.

"We are a family owned and operated business providing a high level of personal service, a reputable build and quality houses at an affordable price.

"All our clients are treated as people, not numbers."

Mr Savietto said the Miravet was an up-market home designed to provide high-end finishes and display outstanding workmanship.

"We also wanted to provide clients with the opportunity to view different products such as electric skylights, a spiral staircase, a dumb waiter and an alfresco area fully equipped for entertaining, as well as modern finishes including acrylic tile texture, full-height porcelain tiling and honed aggregate concrete externally."

From the street the Miravet has a solid and imposing presence and the addition of light-coloured, double-height Donnybrook stone to the portico hints at the stone walls of the home's namesake.

The Miravet is an upside-down home, designed with the living, dining and kitchen upstairs to maximise views from the two balconies and floor-to-ceiling windows.

Upstairs, at the front of the home is the main bedroom suite, which has a big walk-in robe with built-in cabinets and a laundry chute. The ensuite has a



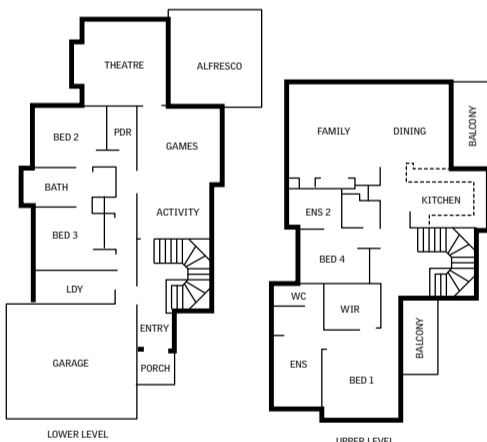
The Miravet has a solid and imposing presence with double-height Donnybrook stone to the portico hinting at the stone walls of its namesake.

Castle built for a family

The Miravet

ADDRESS: Romano Crescent, Iluka
PRICE: \$999,000
BUILDER: Sovereign Building Company
PHONE: 9444 3943

Two storeys, four bedrooms, three bathrooms, powder room, upstairs open-plan living, theatre, games room, alfresco area, double garage



separate toilet, a frameless, hobless shower, full-height tiling and an oval-shaped spa.

A sliding glass door provides access to one of the balconies.

At the top of the stairs is a bedroom and bathroom, which is the perfect location for a guest room, a nursery, or an upstairs playroom for younger children.

Completing the top floor is the open-plan kitchen, family and dining area, which links to the second balcony. The kitchen has plenty of luxury extras, including a fully integrated dishwasher, stone benchtops and multiple drawers.

On the ground floor, the entry leads past the staircase to an



activity room, a games room and a separate theatre room.

These living spaces provide a flexible floorplan which could be configured to meet individual requirements and, when linked with the alfresco area, provide a generous space for entertaining. Two bedrooms, a bathroom, powder room and the laundry

complete the ground floor.

The Miravet requires a minimum block width of 15m and would suit a rectangular or corner block. It has over 300sqm of living area and a total size of 401sqm. A deluxe version of the home is available from \$569,000.

The display home without the outdoor landscaping is \$746,000.



The Miravet is an upside-down home, designed with the living, dining and kitchen upstairs.

